



ENTERPRISE PLAYBOOK 2026

The Great Consolidation: Transitioning to the AI Operating System

From Siloed Point Solutions to Unified, Agentic Architecture.

The Paradigm Shift: Point Solutions are Dead

 Architecture	Siloed AI Point Solutions (The Old Way)	Unified AI Operating Systems (The AIOS Way) 
Architecture	Fragmented & isolated	Unified orchestration layer
Execution	Manual triggers & high latency	Autonomous multi-step execution
Integration	Bespoke API duct-tape (Zapier)	Standardized real-time context (MCP)
Value	Departmental local optimization	Enterprise-wide synergistic ROI

The AIOS Architecture: Building from the Bottom-Up

Layer 3: Multi-Agent Orchestration

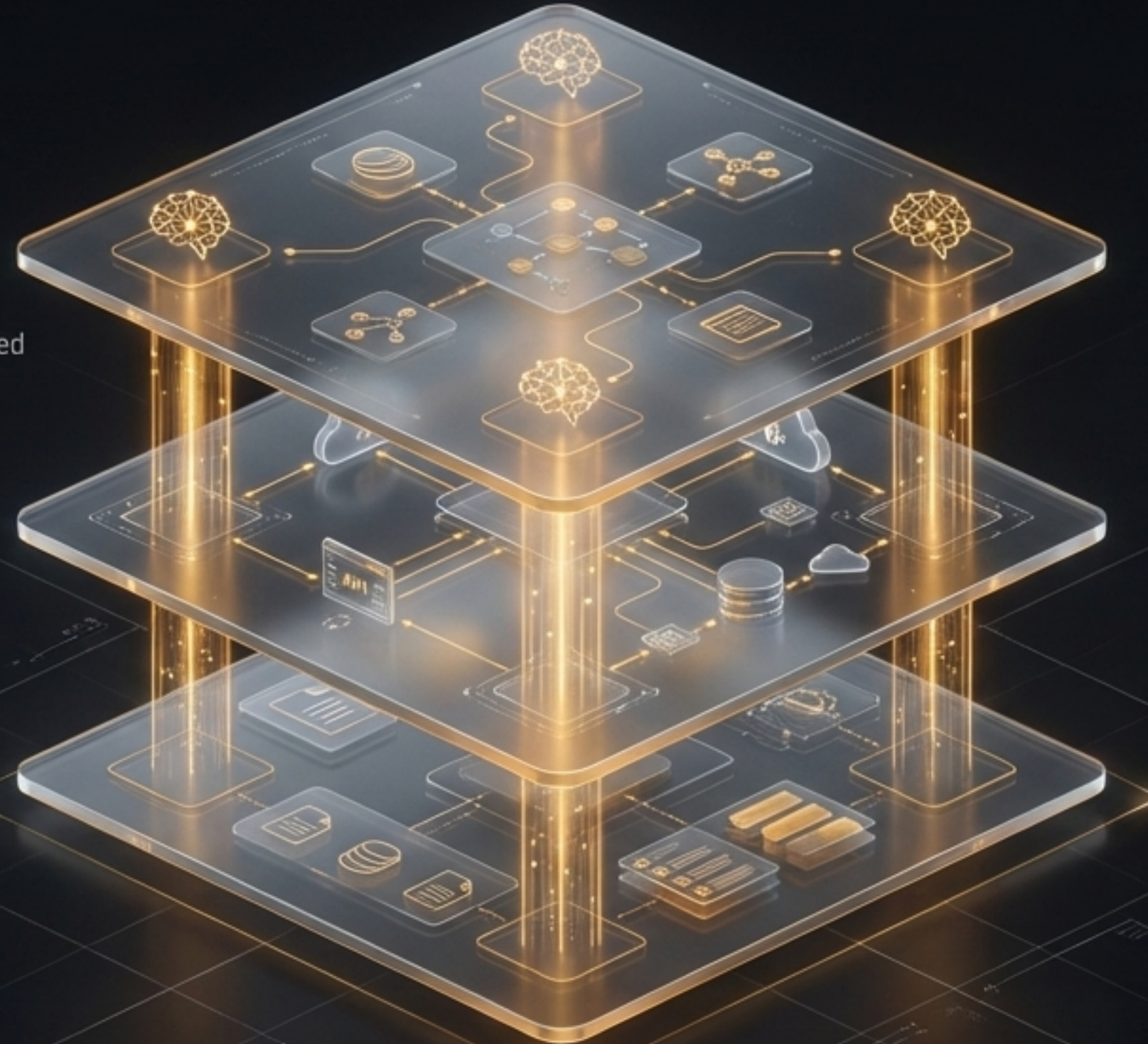
The execution layer. Specialized autonomous agents interact seamlessly with the contextualized workspace. The autonomous workforce.

Layer 2: Integration Layer

Securely connects to live proprietary systems, CRMs, and live APIs. The active data pipeline.

Layer 1: The Context OS

The foundation. Pulls in all history, documentation, and specific business logic. Stops the copy/paste cycle.



Model Context Protocol (MCP): The Universal Connector

- Acts as the “USB-C for AI,” replacing chaotic web integrations with standardized, secure data pipelines.
- Enables AI systems to connect to proprietary data sources with structured I/O and standardized authentication.

Allows businesses to wrap any niche, proprietary system (even those Zapier/Make can't reach) as an auditable MCP tool.



Autonomous Orchestration: The Multi-Agent Engine



The Flow: Planning -> Execution -> Review. Agents dynamically plan multi-step workflows, execute actions across enterprise systems, monitor outcomes, and adapt.

45% Fewer Hand-offs

IBM research demonstrates multi-agent orchestration reduces process hand-offs by 45% and improves decision speed by 3x compared to traditional automation.

The 2026 Enterprise Foundation Model Landscape

Anthropic (Claude)

40%

Market Share

Key Enterprise Strengths:
Superior reasoning accuracy, strict enterprise guardrails, robust safety. The definitive “Business Control Center.”

OpenAI (GPT)

27%

Market Share

Key Enterprise Strengths:
Massive developer ecosystem, high-volume speed, and multimodal vision capabilities.

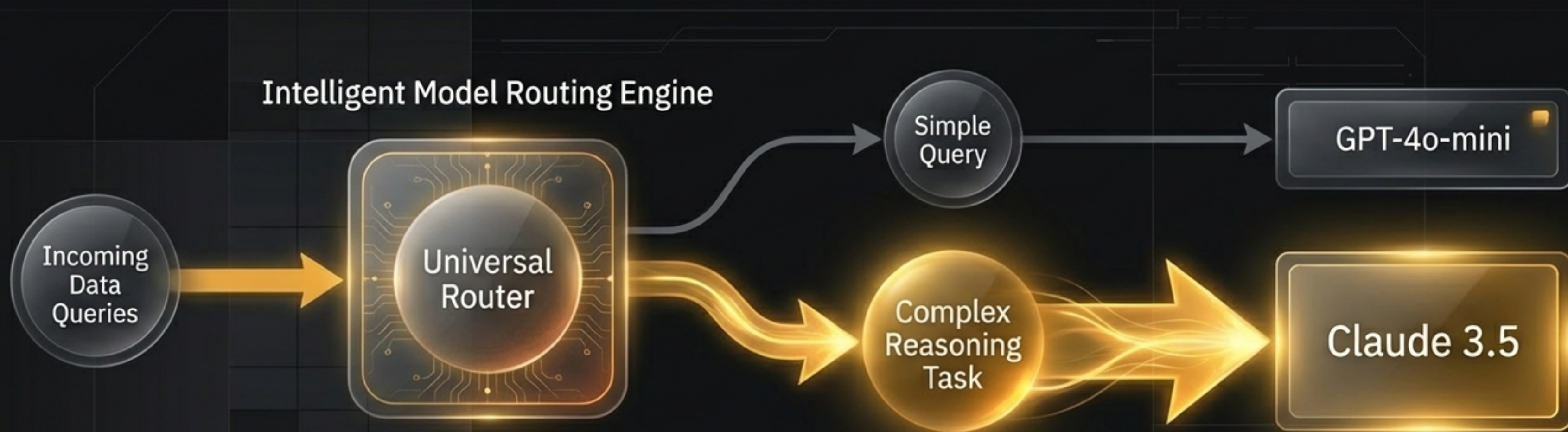
Google (Gemini)

21%

Market Share

Key Enterprise Strengths:
Native workspace integration and vast proprietary data pipelining.

The Synthesis: AIOS as a Universal Router



Core Insight:

An AIOS isn't tied to one model. It connects proprietary legacy systems (via MCP) to a dynamic brain that autonomously chooses the exact right model for the specific task.

The ROI:

Routing simple queries to smaller, faster models and reserving expensive models for complex reasoning reduces overall enterprise AI costs by 40% to 60% while maintaining peak quality.

Deployment Optimizer: Cloud, Hybrid, or On-Premise?

Cloud

Multi-region availability, fast time-to-value, variable workload elasticity.

Cost:



Security:



Latency:



Hybrid

Mixed data sensitivity. Less sensitive workloads in cloud; core IP secured locally.

Cost:



Security:



Latency:



On-Premise / Air-Gapped

Maximum control for strict EU AI Act / SOC 2 compliance.

Cost:



Security:



Latency:



The On-Prem Tipping Point: Self-hosting is increasingly viable. Open-source models (like Llama 3.3 70B) running on just two A100 GPUs require only a ~\$30k hardware investment, achieving within 10% of proprietary model accuracy.

Enterprise Vendor Evaluation Rubric

Security & Governance

- Enterprise Security (SOC 2/EU AI Act)
- AI Governance Controls
- Vendor Viability

Architecture & Integration

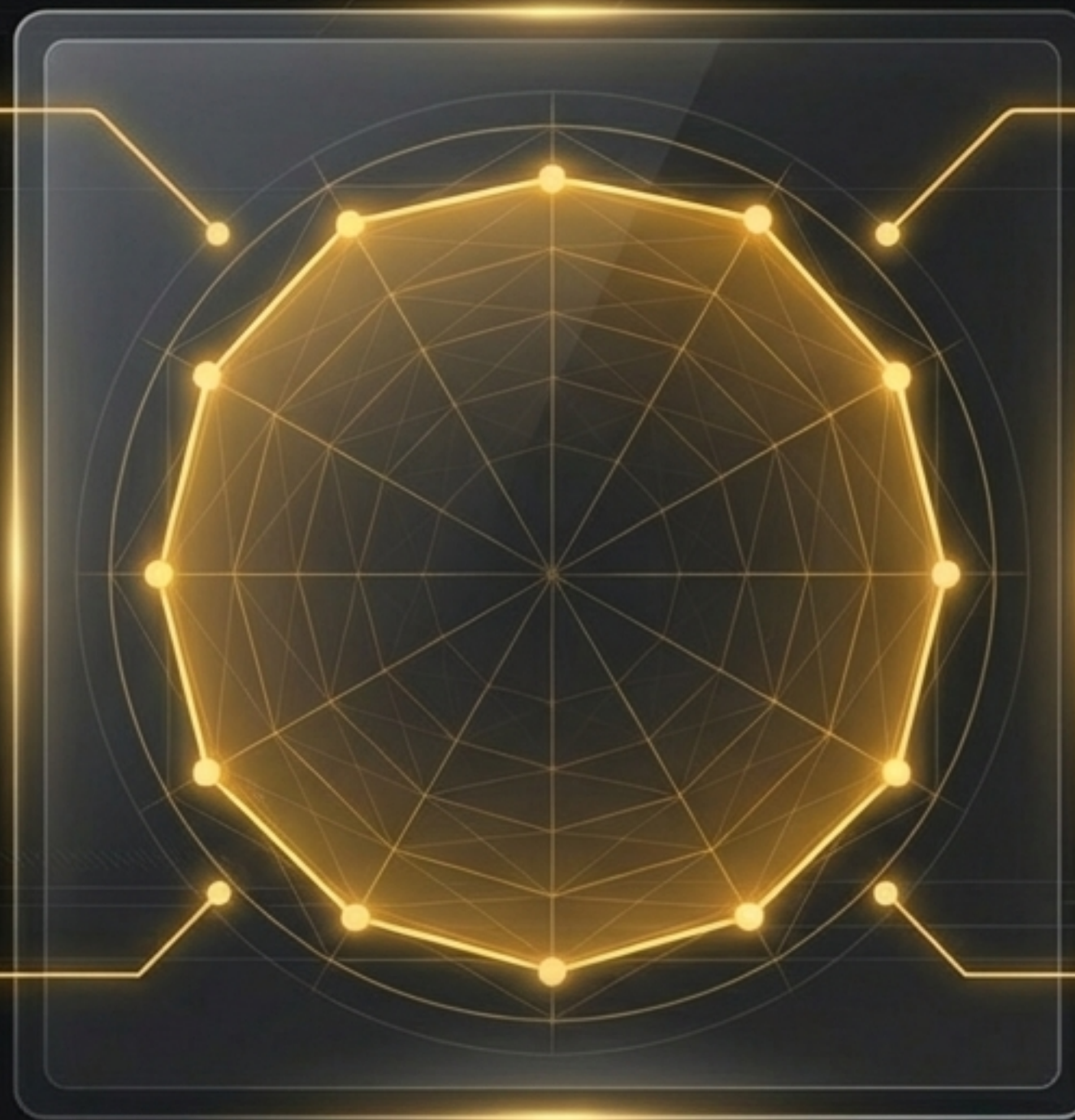
- Foundation Model Flexibility
- Integration Depth (MCP)
- Deployment Flexibility

Usability & ROI

- Developer Experience
- Citizen Developer Support
- Total Cost of Ownership (TCO)

Execution & Knowledge

- Workflow Orchestration
- Knowledge Management (RAG)
- Scalability & Performance



Enterprise Playbook: The Headless EHR (Healthcare)



The Application: Bypassing legacy EMR fragmentation (13+ different systems) using a “Headless EHR” approach. Commure’s AIOS layer interacts with existing systems without being bottlenecked by vendor roadmaps.

The Output: Autonomous multi-agent documentation that translates raw clinical conversations into structured data.

1



~8 minutes
saved per history
and physical note

2



87%
timely note
completion rate
(up from 69%)

3



> 0.8
F1 Accuracy
Score

SMB Playbook: The Niche Customization Engine (Agencies)

```
1 # CLAUDE.md
2 version: 1.0
3 engine: "Claude-3-Opus-Custom"
4 mcp_servers:
5   - name: "Niche_SEO_Tool"
6     endpoint: "mcp://seo-api.custom.com"
7     auth: "Bearer ${SEO_API_KEY}"
8   - name: "Custom_CRM_Data"
9     endpoint: "mcp://crm-data.internal.net"
10    auth: "Bearer ${CRM_API_KEY}"
11
12 workflows:
13   - name: "SEO Blog Generator"
14     trigger: "New Topic Request"
15     actions:
16       - step: "Fetch Keyword Data"
17         server: "Niche_SEO_Tool"
18         params: { topic: "{{topic}}" }
19       - step: "Enrich with CRM Insights"
20         server: "Custom_CRM_Data"
21         params: { client_id: "{{client_id}}" }
22       - step: "Generate Content"
23         prompt: "Create comprehensive blog post about {{topic}} using keywords
24               {{keywords}} and insights {{crm_data}}"
25       - step: "Deploy to CMS"
26         target: "Shopify/WordPress"
```

Artifacts Dashboard UI

Search

Active Workflow: Custom SEO Blog Generation

Generation Status **95%**
Finalizing CMS Deployment

Keyword Performance

Top Keywords: 'AI Automation', 'Niche Marketing'

Content Calendar

Sun	Mon	Tue	Wed	Thu	Fri	Sat
				1	2	3
4	5	6	7	8	9	10
11	12	13	14	15	16	17
18	19	20	21	22	23	24
25	26	27	28			

Content Pipeline

Post: "The Future of Agency Automation" - Status: **Published** (Shopify)

The Application

Using Claude Code and Custom MCP servers to bypass the limitations of generic SaaS automation. Connecting proprietary vertical-specific software (e.g., niche SEO tools, custom CRM data) directly into a unified agentic workspace.

The Output

Automated, end-to-end operational suites replacing manual content production, research, and data entry.

The Metrics:

Delivering custom SEO blog generation connecting directly to Shopify/WordPress in **~15 minutes** at **\$0.70 per asset**.

The 90-Day Implementation Roadmap

Node 1: Foundation (Days 1-30)

Audit current AI spend. Establish governance and RBAC frameworks. Select platform and configure project-specific CLAUDE.md operating rules.

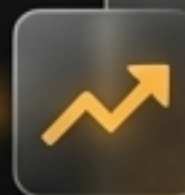
Node 2: Pilot & Integrate (Days 31-60)

Build read-only MCP server integrations to core legacy systems. Pilot 2-3 high-value, human-in-the-loop agentic workflows.

Node 3: Scale & Optimize (Days 61-90)

Expand write-access automation. Implement intelligent model routing to optimize API costs. Deploy custom dashboards across teams.

Measuring the Impact: The AIOS ROI Framework



The Benchmark: Enterprise AI automation delivers 250% to 300% ROI, completely eclipsing traditional returns.



Value Creation: Fully-loaded labor hours saved + error reduction + revenue acceleration.



TCO Reduction: Consolidated software licenses + API cost optimization via intelligent model routing.

Key Rule: Measure fully-loaded costs and set explicit success metrics before each agentic experiment.

The Future is Built from the Bottom Up.

**In 2026, companies won't
just use AI—they'll run on it.**

The era of fragmented tool bloat is over. The enterprises that master unified AI Operating Systems today will define the competitive advantage of the next decade.